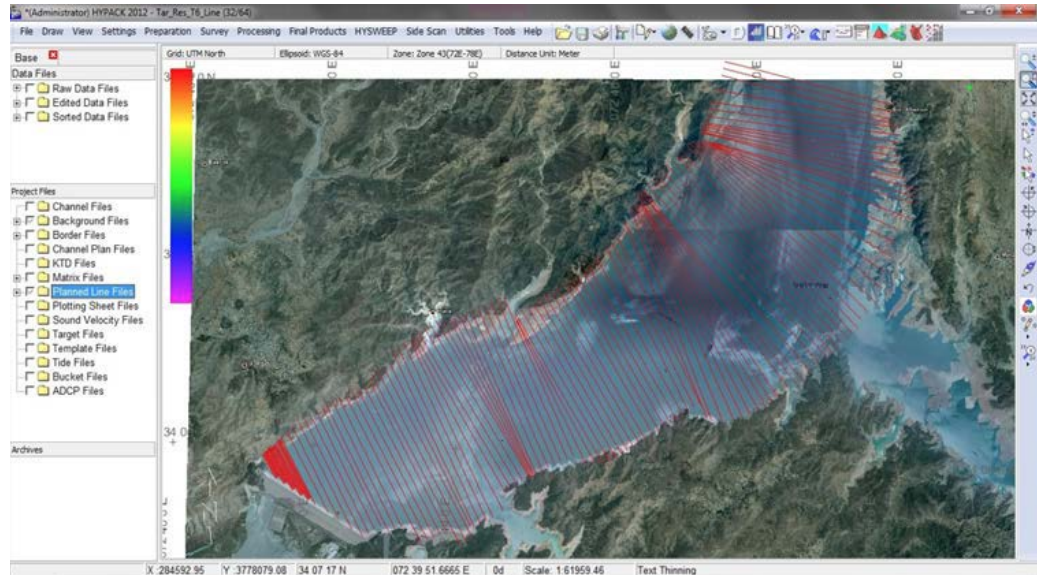


# The CPP Connection

August 2016 Newsletter

Industrial Strength  
MIGHTY PUMPS  
DIVE • PUMP • BARGE • DREDGE  
CANADA PUMP & POWER



Canada Pump and Power (CPP) Corporation is expanding its hydrographic survey capability!

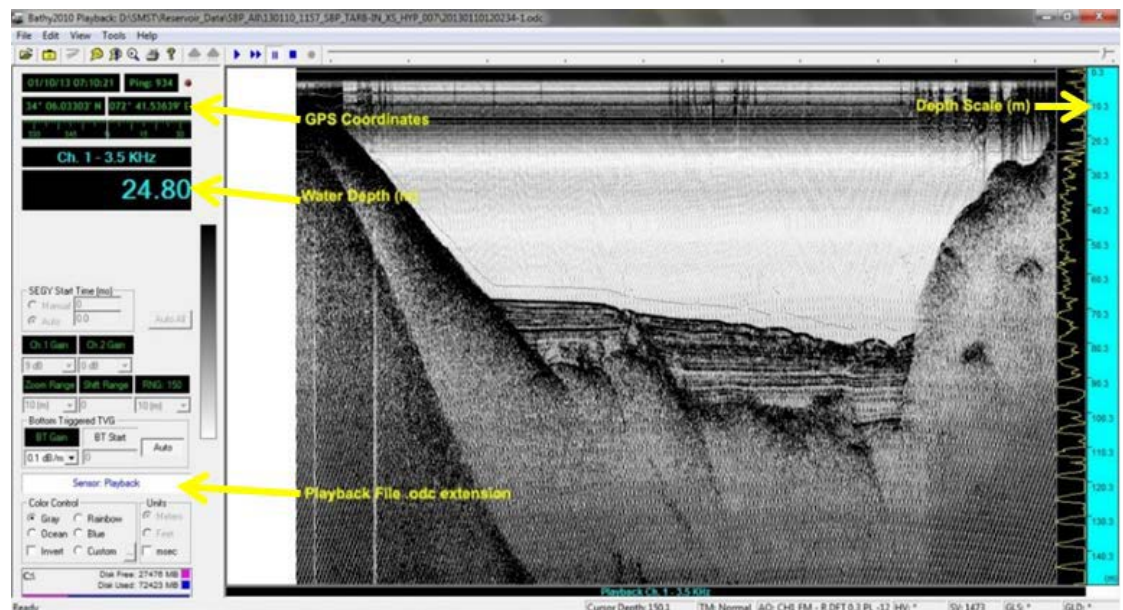
With two large Oil Sands Plants as existing customers, CPP is adding survey equipment to our fleet that uses variable frequencies to provide sub-bottom profile and in-water profile information.

This means we can provide useful information to supply the volume of materials in a pond, either suspended in the water or on the bottom.

We can also determine the type of material underneath and around a pond so that the stability of the pond can be addressed.

Finally, we can locate and identify any voids in the bottom of a body of water that are acting as rivers or underground tributaries letting water come into or out of the body of water in question.

For more information on our full product lines see our website [www.MightyPumps.com](http://www.MightyPumps.com)





# The CPP Connection

August 2016 Newsletter

Industrial Strength

MIGHTY PUMPS

DIVE • PUMP • BARGE • DREDGE

CANADA PUMP & POWER

Equipment Type	Quantity Available	Description
<b>Trash Pumps (Diesel, Hydraulic, Electric)</b>		
<b>Dewatering Trash (DT)</b>	96 Available	<ul style="list-style-type: none"> <li>• 18" DT18, up to 17,300 gpm or up to 240' of head</li> <li>• 12" DT12, up to 6,100 gpm or up to 200' of head</li> <li>• 8" DT8, up to 4,500 gpm or up to 230' of head</li> <li>• 6" DT6, up to 2,800 gpm or up to 150' of head</li> <li>• 4" DT4, up to 1,450 gpm or up to 150' of head</li> </ul>
<b>High Head Trash (HT)</b>	54 Available	<ul style="list-style-type: none"> <li>• 14" HT14, up to 10,500 gpm or up to 360' of head</li> <li>• 12" HT12, up to 5,100 gpm or up to 360' of head</li> <li>• 10" HT10, up to 4,500 gpm or up to 350' of head</li> <li>• 8" HT8, up to 3,130 gpm or up to 300' of head</li> <li>• 6" HT6, up to 1,540 gpm or up to 390' of head</li> </ul>
<b>High Head Water (HW)</b>	17 Available	<ul style="list-style-type: none"> <li>• 8" HW8, up to 3,970 gpm or up to 660' of head</li> <li>• 6" HW6, up to 1,660 gpm or up to 670' of head</li> <li>• 4" HW4, up to 770 gpm or up to 710' of head</li> </ul>
<b>Hydraulic (HY)</b>	27 Available	<ul style="list-style-type: none"> <li>• 8" HY8, up to 4,500 gpm or up to 230' of head</li> <li>• 6" HY6, up to 2,800 gpm or up to 150' of head</li> <li>• 4" HY4, up to 1,450 gpm or up to 150' of head</li> </ul>
<b>Submersible Electric</b>	142 Available	<ul style="list-style-type: none"> <li>• 1 HP to 150 HP, High-Chrome, Stainless Steel:               <ul style="list-style-type: none"> <li>○ Trash Pumps</li> <li>○ Slurry Pumps</li> <li>○ Chopper Pumps</li> </ul> </li> </ul>
<b>Generators/Light Towers</b>	32 Available	<ul style="list-style-type: none"> <li>• 20KW Light Towers</li> <li>• 25KW, 50KW, 70KW, &amp; 125KW Generators</li> </ul>
<b>Barges</b>	28 Available	<ul style="list-style-type: none"> <li>• Modular Barge Units</li> <li>• Floating Intake Barge</li> </ul>
<b>Dredges</b>	9 Available	<ul style="list-style-type: none"> <li>• Ellicott Swing Ladder Dredges with up to 60 foot depth capability</li> <li>• LWTRemote Control Dredges</li> <li>• Mighty Automatic Dredges</li> <li>• Two Yard Clamshell Excavator with 85 foot reach</li> <li>• Two Yard Dragline with 100 foot reach</li> <li>• One Yard Skyline Excavator with 1,000 foot reach</li> </ul>
<b>Diving Systems</b>	2 Available	<ul style="list-style-type: none"> <li>• Fresh Water, Potable Water and Contaminated Water Entry Systems</li> </ul>
<b>Heavy Equipment</b>	17 Available	<ul style="list-style-type: none"> <li>• Skyline Excavator, Draglines, Loaders, Dozers, Backhoes, and HDPE Fusing Units</li> </ul>
<b>Trucks</b>	45 Available	<ul style="list-style-type: none"> <li>• Tandem &amp; Tridem Gravel Trucks, Wet Material Handling Trucks, Service Trucks and Mechanic Trucks</li> </ul>
<b>Support Equipment</b>	In Stock	<ul style="list-style-type: none"> <li>• Pipe, Hose, Fittings, Light Plants, Fluid Road Crossings, Fusion Machines, and Dive Equipment</li> </ul>