

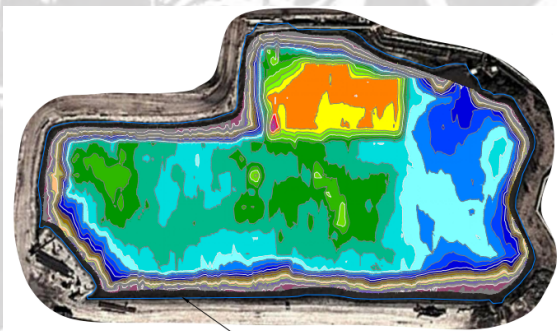
HYDROGRAPHIC SURVEYING

Canada Pump and Power employs a highly skilled and qualified Hydrographic Survey team that can be deployed to conduct surveys on any body of water

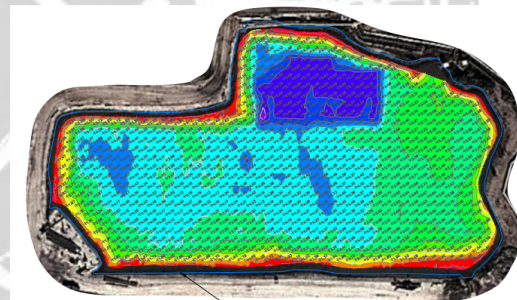


SURVEY RESULTS

Included in each of Canada Pump and Powers Hydrographic Survey reports is the following:



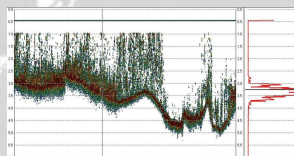
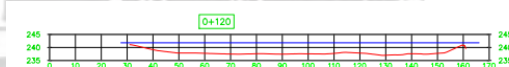
Actual sediment elevations (when local benchmark datum is provided)



Capacity depth of pond including calculated pond volumes at varying depths



A colour shaded topographic bottom profile that shows the depths of the entire area surveyed



Simple and complex bottom profiles for different pond cross sections to visualize extent of sediment deposits

Phone: 1-877-898-3494
Email: sales@mightypumps.com
www.mightypumps.com



MIGHTY PUMPS™

**INDUSTRIAL
MARINE
OPERATIONS**



HYDROGRAPHIC SURVEYING

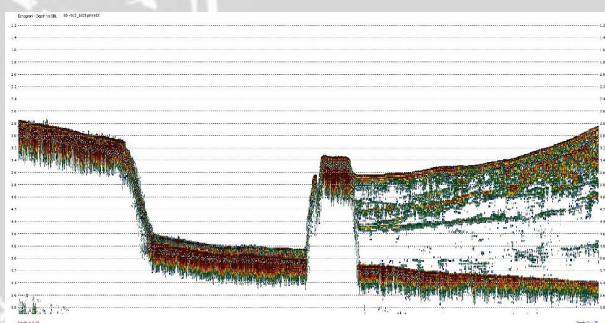
SURVEY FEATURES

- Single Beam Dual Frequency Echo sounder penetrates through layers of underwater sediment and vegetation to provide much greater water column detail
- GPS positioning provides accurate elevation data for each depth measurement recorded
- Real-time feedback of depth and position for immediate depth and bottom profile results
- Data collector logs echo sounding results up to 20 times per second for high level accuracy

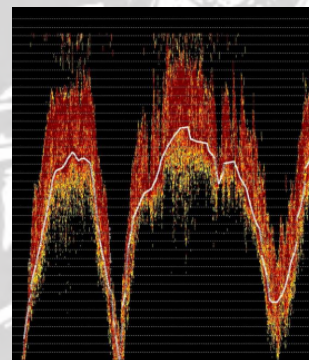


BENEFITS

- Obtain detailed bottom profiles for use in a variety of applications including before and after dredging surveys, sediment distribution, bottom feature identification and weed harvesting
- View bottom features that may hinder the flow of water or obstruct underwater intakes and outfalls
- Determine pond capacity at varying water levels
- View bottom profiles on satellite imagery for useful perspective of bottom features and sediment deposits



Example 1: The image above shows large amounts of sediment collecting behind an underwater concrete wall which has caused an intake to be blocked. Information like this can help improve plant processes



Example 2: The image above shows large amounts of subsurface marine growth on pond bottom. Identifying the bottom composition can reduce costs when selecting the correct dredging method for a pond

