



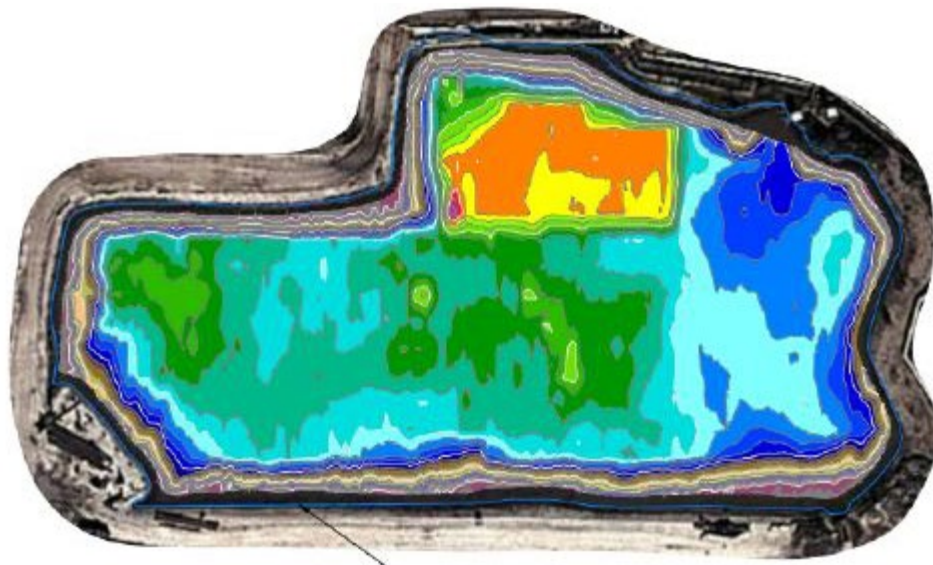
# The Mighty Update

May 2020 Newsletter

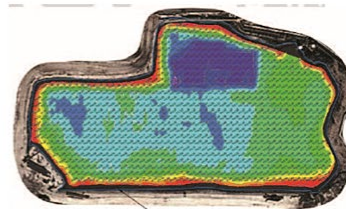
## Mighty Pumps Is Proud to Present The Mighty Duck!



Mighty Pumps has added the Mighty Duck to its fleet of autonomous and remote operated solutions! The Mighty Duck is an all-terrain, unmanned ground vehicle capable of travelling on land and in water. It can handle the "mightiest" environments with its rugged build, low ground pressure and traction tires. This allows the Mighty Duck to navigate effortlessly through soft soils, vegetation, thick mud and steep grades. While travelling through water, the Mighty Duck can reach speeds up to 4 km/hr!



The Mighty Duck, in conjunction with Canada Pump and Power's Hydrographic Surveying services, is able to provide highly detailed reports on any body of water, while removing the risk of having personnel on site. These reports include data on sediment elevations, depth and volume calculations and topographic bottom profiles. Our technology allows for both simple and complex bottom profiles for various pond cross sections. This is used in a variety of applications including before/after dredging surveys, sediment distribution, bottom feature identification and weed harvesting.



**Mighty Pumps is committed to being the best and easiest solution for all industrial marine services and products. Please give us a call at 1-780-922-1178 or email MP at [sales@mightypumps.com](mailto:sales@mightypumps.com) for any industrial marine products or service solutions!**

[Click here to discover more!](#)

## Industrial Marine Solutions



**Dewatering Trash Series  
Mighty Pump**



**High Head Trash Series  
Mighty Pumps**



**High Head Water Series  
Mighty Pumps**



**Autonomous Submersible  
Mighty Pumps**



**Mighty Modular Barge**



**Autonomous Mighty Dredge**

Canada Pump and Power, 53113 Range Road 211, ARDROSSAN, AB T8G 2C5, Canada, 7809221178

[Unsubscribe](#) [Manage preferences](#)