



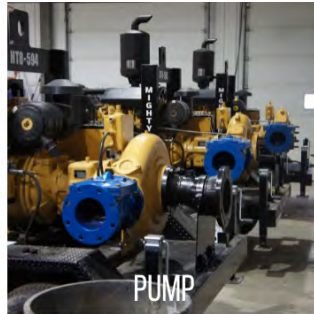
The CPP Connection

MONTHLY NEWSLETTER

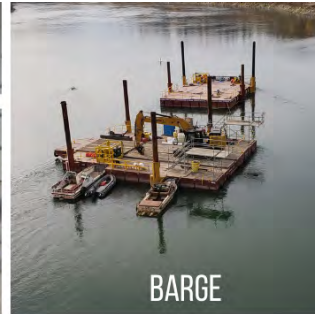
Canada Pump and Power in Action!



DIVE



PUMP



BARGE



HDPE FUSION



FAT TRUCKS



DREDGE



PUMP



AMPHIBIOUS VEHICLE



WORK BOATS

What is Canada Pump and Power all about?

Canada Pump and Power was founded in 2010 in Alberta. Our management personnel have decades of experience in the Marine Industrial Industry and our team of professionals includes engineers, tradesmen, supervisors, operators, and a certified safety professional.

Canada Pump and Power offers unique technological innovations that improves safety, reliability, and cost less to operate.

Canada Pump and Power focuses on four core areas in Dive, Pump, Barge, and Dredge. Canada Pump and Power compliments the four core areas by also providing: Ice Breakers, Tugboats, Hydrographic surveys, Fat Trucks, HDPE Fusion, and Autonomous Vehicles.

Canada Pump and Power has been operating across Canada and working along with our Sister Companies in the United States and Brazil. We also have strong Distributor Partnerships in British Columbia and Manitoba.

Canada Pump and Power's mission is to be the best and easiest solution for Dive, Pump, Barge, Dredge needs for all of our existing and future clients.

Call our sales experts to help you on your next Industrial Marine project!



Canada Pump and Power is committed to being the best and easiest solution for all industrial marine services and products. Please give us a call at 1-780-922-1178 or email CPP at sales@canadapumpandpower.com for any industrial marine products or service solutions!

Click here to discover more!

Industrial Marine Solutions



Dewatering Trash Series Mighty Pump



High Head Trash Series Mighty Pumps



High Head Water Series Mighty Pumps



Rotary Lobe Pumps



Commercial Diving



Submersible Electric Pumps



Barges



HDPE Fusion Equipment and



Generators



Floating Walkways



Fluid Road Crossings



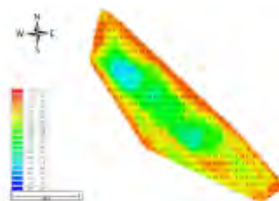
Autonomous Mighty Dredge



Long Reach Excavators



Mighty Duck ROV



Hydrographic Survey Equipment

