

# CANADA PUMP & POWER



## February Newsletter

*Canada Pump and Power is your trusted partner for industrial marine products and services*

*The best and easiest solution of Dive, Pump, Barge, and Dredge of all of our existing and future clients.*

[Visit our Website](#)



# Equipment Spotlight

Komatsu PC800 With 75 Feet of Reach



**Available with:**

- Standard 3 Yard Digging Bucket
- Spoon
- Clamshell
- Dredgecavator Attachment

## Where Power Meets Versatility!

Unless you see it in action, it hard to visualize the difference between a standard excavator and the PC800 long reach.

For context, this machine can reach almost halfway across a standard football field while the tracks are positioned at the

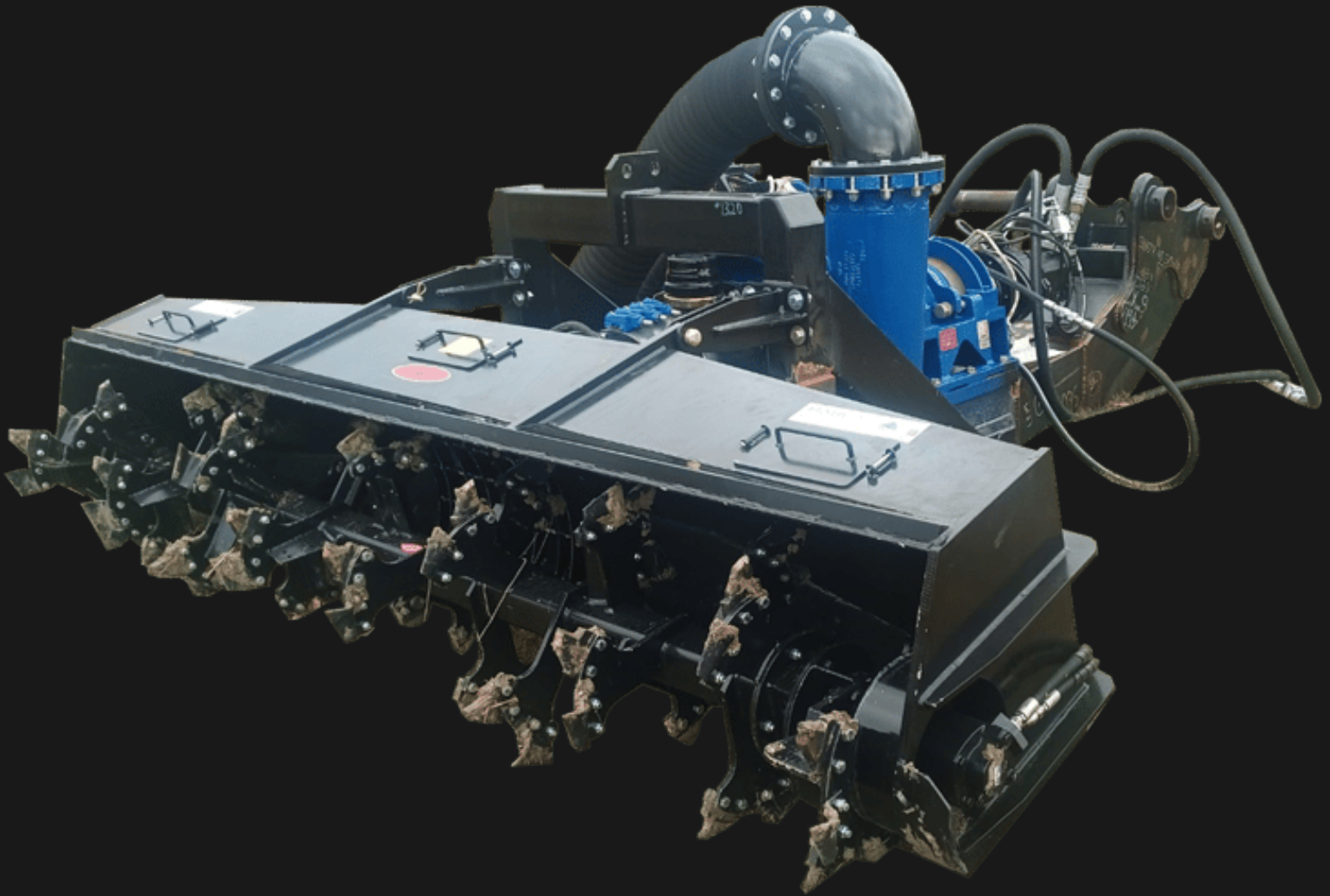


sideline!

The PC800 is ideal for large excavation work where some extra reach may be required.

We have also designed and built a specialized dredge head attachment that turns this machine into the awesome "Dredgecavator". This gives you the versatility to reach into a pond and extract a mixture of solids and water which can then be fed to shore.

The PC800 with 75 foot long reach OR Dredgecavator is available for operations or straight rental now.



*Dredgecavator Attachment*

Email Our Sales Team  
[sales@mightypumps.com](mailto:sales@mightypumps.com)

Call Our Sales Team  
780.922.1178

# Mighty Pumps

Learn more about our entire Mighty Pumps catalogue and find the right solution



Find a Mighty Pump For Your Next Job

## Meet The Crew

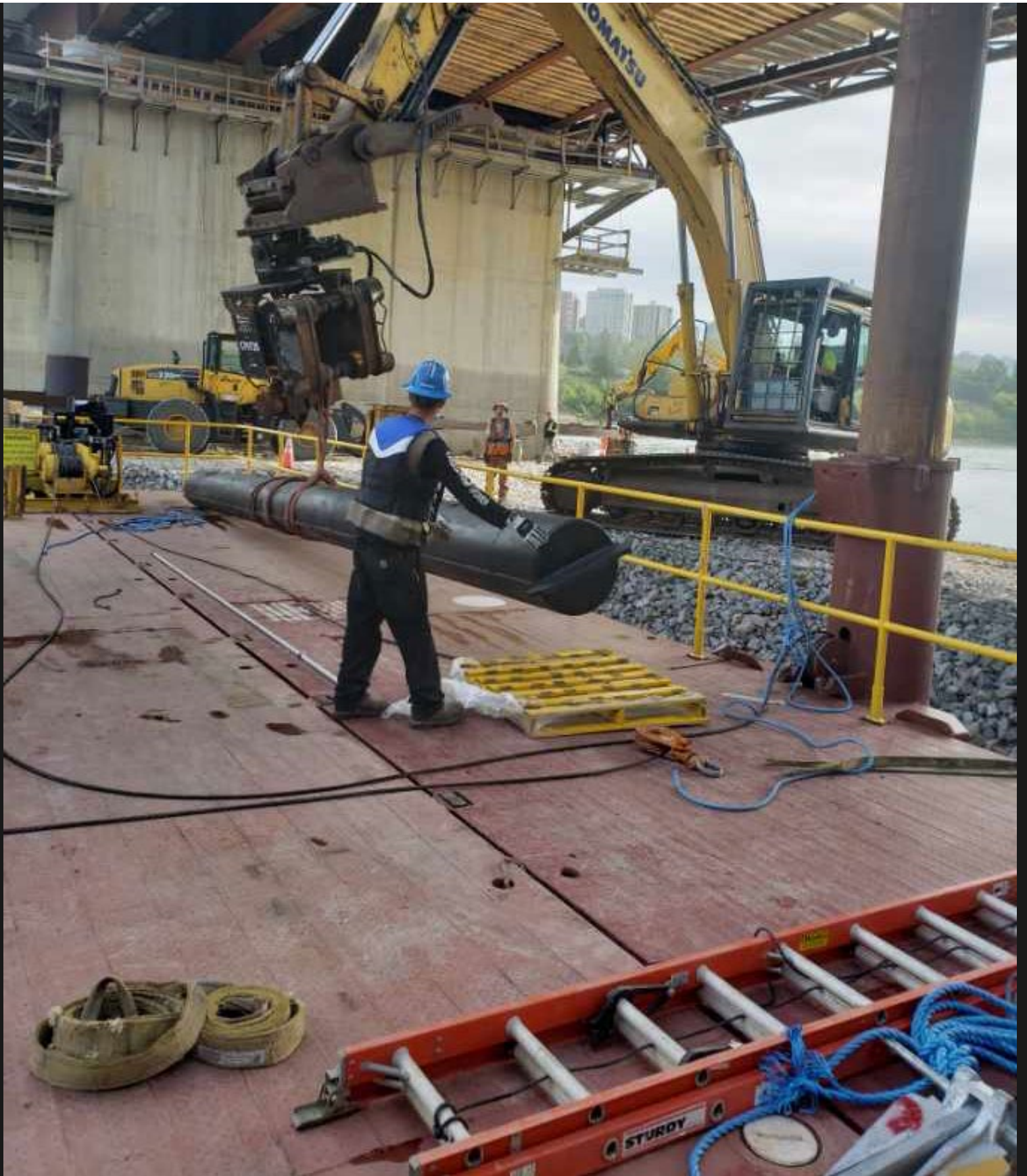
Jeff Young - Special Projects Superintendent

Originally from Rivers, Manitoba, Jeff Young moved to Fort McMurray at age 19 to begin his career in the marine services industry. Beginning in a general labourer position, Jeff worked his way up through the industry, moving through supervisory, managerial, and superintendent positions over the next several years.









Jeff joined *Canada Pump & Power* in 2010, and is now their Special Projects Superintendent. In this role, he is responsible for mobilizing dredging, pumping, barging, and marine projects before execution, as well as

managing specialty projects from start to finish. The hands-on experience Jeff has acquired during his career provides him with a keen intuition for complex marine projects, and the variety of challenges and situations he encounters with *CPP* continues to hone his professional acumen.

Jeff enjoys the highly detailed and technical nature of various projects, which require project planners and operators to be aware of such details like atmospheric pressure, elevation from sea level, and water temperature. After working directly with marine equipment in the earlier stages of his career, he can move easily between technical theory and practice, bringing a great deal of expertise to the project site.



# Simplified Pump Troubleshooting

## 4 Common Problems When a Pump Fails to Prime

---

Priming System Valve is closed

A closed priming system valve will prevent air from being evacuated from the suction line. Open valve and start pump.

Volute Drain Valve is Open

An open drain valve will allow air into the pump. Close drain valve and start pump

Intake Suction Screen Plugged

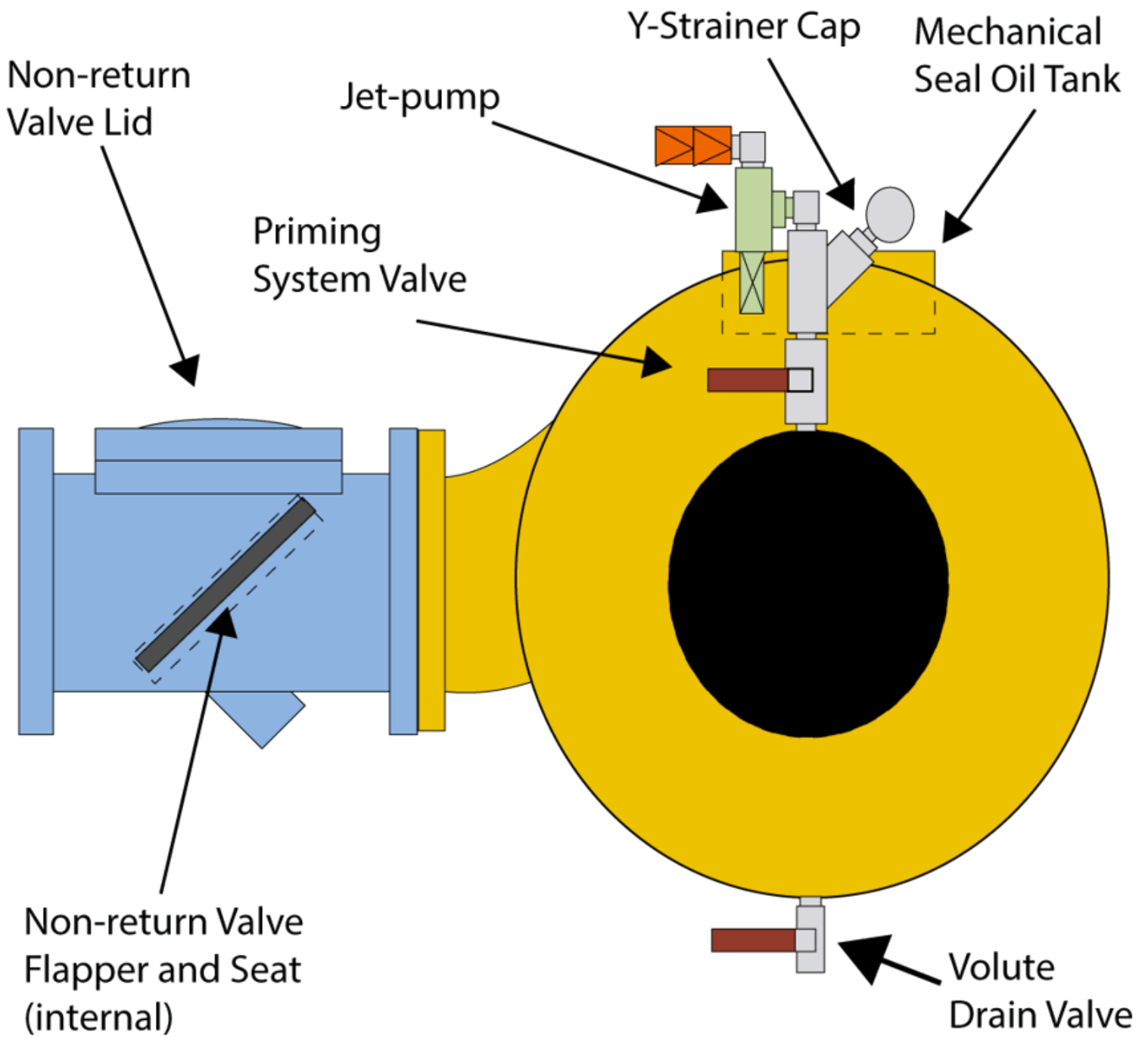
Shut down the pump and open volute drain valve. Product in suction hose will "backwash" screen. Also remove intake screen from product and inspect for debris.

Perform System Check

Remove intake suction hose and place a mud flap or vacuum pad over the pump intake to test priming system suction. Suction will register on the gauge mounted on the Y-strainer cap.

[More Simplified Troubleshooting](#)





## Social media

Stay up-to-date with current activities and future events by following us on your favorite social media channels.



## Where to find us

Canada Pump and Power

11237 87 Ave  
Fort Saskatchewan  
AB

Changed your mind? [Unsubscribe](#)