



The CPP Connection

MONTHLY NEWSLETTER

September 2020 Newsletter

CPP Supporting Heavy Construction Equipment



Canada Pump and Power (CPP) continues to effectively plan and execute marine projects with our experienced and knowledgeable teams. CPP's expertise, high level of detail, and communication with our clients allow us to review all angles of the project and make sure we are prepared for almost any work environment. Since the beginning of September 2020, CPP has been providing Engineering, Operations and Marine Equipment Support for a major bridgeworks projects in the North Saskatchewan River. CPP is currently utilizing three jetboats, one zodiac boat, and two large barge platforms. Each barge platform is capable of supporting a variety of construction equipment with a total weight capacity up to 140,000 lbs.

We continuously strive to be the best and easiest solution of Dive, Pump, Barge and Dredge needs for all our existing and future clients. Please contact our Team to discuss your upcoming application and see what solutions CPP can provide for you!



Canada Pump and Power is committed to being the best and easiest solution for all industrial marine services and products. Please give us a call at 1-780-922-1178 or email CPP at sales@canadapumpandpower.com for any industrial marine products or service solutions!

[Click here to discover more!](#)

Industrial Marine Solutions



**Dewatering Trash
Series Mighty Pump**



**High Head Trash
Series Mighty Pumps**



**High Head Water
Series Mighty Pumps**



Rotary Lobe Pumps



Commercial Diving



**Submersible Electric
Pumps**



Barges



**HDPE Fusion
Equipment and
Training**



Generators



Floating Walkways



Fluid Road Crossings



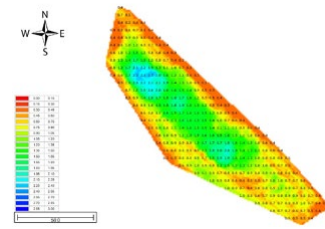
**Autonomous Mighty
Dredge**



**Long Reach
Excavators**



Mighty Duck ROV



**Hydro-graphic Survey
Equipment**

Canada Pump and Power, 53113 Range Road 211, ARDROSSAN, AB T8G 2C5, Canada, 7809221178

[Unsubscribe](#) [Manage preferences](#)